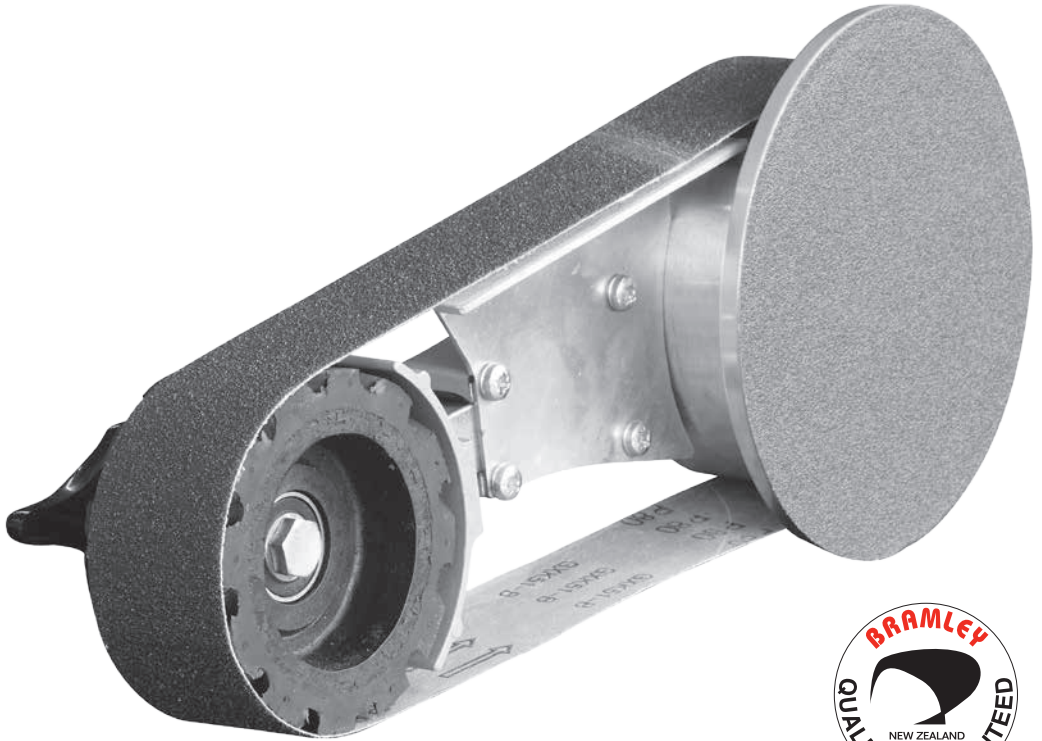


Operating Instructions & Parts List

Linishall Model 915/50 Belt & Disc Grinding Attachment



BRAMLEY

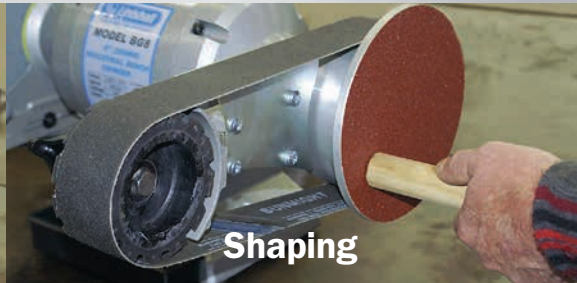
Linishall Belt & Disc Grinding Attachment

Thank you for purchasing the Linishall Belt & Disc Grinding Attachment.

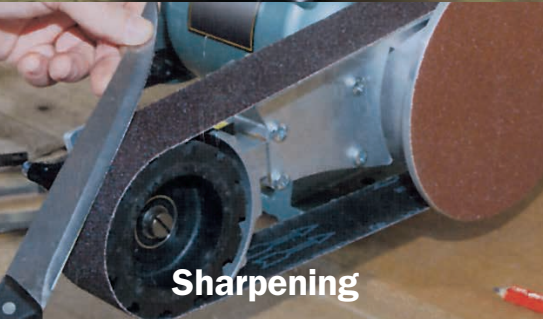
- **Attaches easily to most 200mm (8") and 250mm (10") grinders that have screw-on wheel guards**
- **Strong long-lasting cast metal construction**
- **Sparkling, easy-care hardwearing finish**
- **Disc: 178mm (7") Belt: 915mm x 50mm (36" x 2")**



Grinding



Shaping



Sharpening



Sanding/polishing

10 important safety considerations

- Always use approved safety spectacles when using this machine
- Use an apron or make sure you have no loose fitting clothing, which could get entangled in the machine
- Do not mount the machine in free access areas or walkways
- Make sure the machine displays the appropriate safety signs
- Replace the belt when it shows signs of wear
- Be sure that the belt lap is pointing in the right direction
- Never leave the machine running or with power on whilst not in use

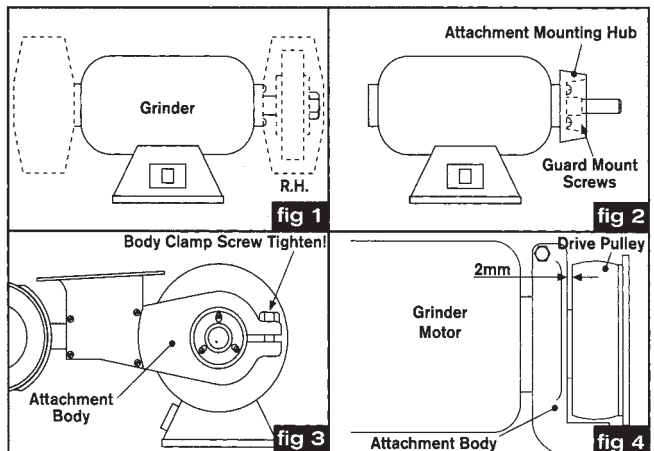


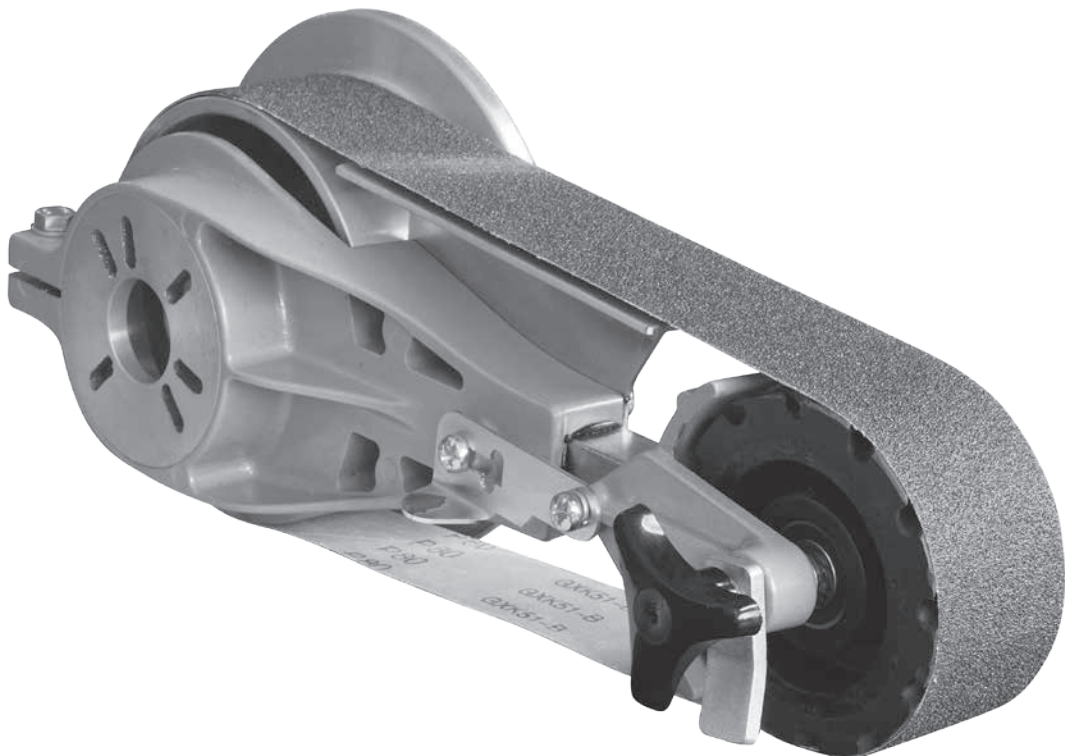
Optional addition - mitre table

Fitting Instructions (read carefully before fitting)

1. Remove attachment from packaging and ensure all parts are present.
2. Remove RH side guard from grinder along with grinding wheel and inside guard (fig 1).
3. The inside guard is usually secured by 3 or 4 screws to the end of the grinder motor flange. These screws are utilised to secure the attachment mounting hub onto the grinder motor flange (fig 2).
4. Once the attachment mounting hub is secured, the attachment body is then fitted to the mounting hub - ensure that the body clamp screw is **tightened** (fig 3).
5. The attachment drive pulley has 2 plastic sleeves installed in the centre bore. With both sleeves installed the pulley may be fitted to a 1/2" diameter shaft. With one sleeve installed, the pulley may be fitted to a 5/8" diameter shaft. With no sleeve installed, the pulley may be fitted to a 3/4" diameter shaft. Just push out the sleeves necessary to suit correct shaft size.
6. Install the washers that are supplied with the attachment onto the shaft so as to locate the position of the drive pulley on the shaft giving approximately 2mm clearance from the inside of the drive pulley to the attachment body (fig 4). Once the drive pulley is in the desired position, insert remaining washers onto the shaft.
7. Insert the shaft nut onto the shaft and screw the drive pulley on firmly. (The rotation of the motor shaft has a tightening effect on the drive pulley and nut).
8. Install attachment belt onto the machine (take note as to the direction of the arrows on the back side of the belt - this is the direction in which the belt must travel).
9. Belt tracking - **IMPORTANT** IT IS RECOMMENDED TO TEST THE TRACKING BY ROTATING THE BELT BY HAND FIRST. If power is applied when tracking is badly adjusted, either the belt or machine can be damaged if it runs "off" towards the motor / grinder or, more importantly, if the tracking is "out" the other way, the belt may fly off the machine causing a safety hazard.

To track the belt, release the rubber contact wheel spindle-locking nut, which will allow the tracking knob to be rotated. The spindle is machined out of true (i.e. bent) and rotation of this causes the rubber contact wheel to move in such a manner which achieves tracking. Rotating the tracking knob slowly will move the belt back and forth across the wheels. Find the desired position with the belt central on both wheels and re-tighten the spindle-locking nut firmly.





New Zealand R.R. Bramley & Co Ltd

184 Marua Road, Mt Wellington (PO Box 14-114, Panmure)
Auckland, New Zealand.

Ph: + 64 9 579 2036 Fax: +64 9 525 0735

Email: sales@bramley.co.nz

www.bramley.co.nz

Australia Garrick Herbert Pty Lyd

460-462 The Boulevard (PO Box 3118)
Kirrawee, NSW 2232, Australia

Ph: + 61 2 9545 6633 Fax: +61 2 9545 4222

Email: sales@garrickherbert.com.au

www.garrickherbert.com.au

USA & Canada Garrick USA LLC

5455 West 6th Street (PO Box 874)
Winona, MN 55987, USA

Ph: +1 507 474 9660

Email: sales@garrickusa.com

www.garrickusa.com

BRAMLEY

**Precision and Mechanical Engineers
Machine Tool Manufacturers**