

GARRICK

Electric Drill Bit Sharpener

Model DS13



INSTRUCTION MANUAL

Part No	Description	Qty.	Part No	Description	Qty
	Top Housing		25	Locknut for Fuse block	1
2	Button	1	26	Cover	1
3	Screw	2	27	Cushion	4
4	Spring Leaf	2	28	Base	1
5	Screw	2	29	Soren	11
6	Terminal		30	Dust Cap	1
7	Fixing Shelf		31	Cor	1
8	Sore	2	32	Connector Board	1
9	Pad	1	33		
10	Grinding Wheel		34	Screw	4
11	Connector	1	35	Bracket	1
12	Seore		36	Stand Socket	1
13	Screw	2	37	Positioner for Blade	1
14	Positioner		38	Blade Holder	6
15	Sere	2	39	Steel Spring	6
16	Votot		40	Transition Tube	1
17	Wire Restraining		41	Locknut	1
18	Screw	2	42	Hold Accessory (Includes #35, 36, 37, 38, 39)	1
19	Switch	1	43	Chamfering Ring	1
20	PCB	1	44	Small Cover	1
21	Fuse Block	1			
22	Nut for Fuse				
23	Fuse	1			
24	Inductance	1	48	Big Cover	1

PLEASE READ THE FOLLOWING CAREFULLY

THE MANUFACTURER AND/OR DISTRIBUTOR HAS PROVIDED THE PARTS DIAGRAM IN THIS MANUAL AS A REFERENCE ONLY. NEITHER THE MANUFACTURER NOR DISTRIBUTOR MAKES ANY REPRESENTATION OR WARRANTY OF ANYKIND TO THE BUYER THAT HE OR SHE IS QUALIFIED TO REPLACE ANY PARTS OF THE PRODUCT. IN FACT, THE MANUFACTURER AND/OR DISTRIBUTOR EXPRESSLY STATES THAT ALL REPAIRS AND PARTS REPLACEMENTS SHOULD BE UNDERTAKEN BY CERTIFIED AND LICENSED TECHNICIANS AND NOT BY THE BUYER. THE BUYER ASSUMES ALL RISK AND LIABILITY ARISING OUT OF HIS OR HER REPAIRS TO THE ORIGINAL PRODUCT OR REPLACEMENT PARTS THERETO, OR ARISING OUT OF HIS OR HER INSTALLATION OF REPLACEMENT PARTS THERETO.

AUSTRALIA:

Garrick Herbert Pty Ltd
www.garrickherbert.com.au

NEW ZEALAND:

R.R. Bramley & Co Ltd
www.bramley.co.nz

“Caution-Read the operating instructions to reduce the risk of injury”



Wear safety goggles. Sparks generated during work or splinters, chips and dust emitted by the device can cause eye damage.



Wear earmuffs. The impact of noise can cause damage to hearing.



Wear gloves. You should wear gloves at all times when handling the drill bits.

SPECIFICATIONS

Power	240V, 50Hz; 80W, 4200RPM
Working Capacity	9/64” to 33/64” (3mm to 13mm) (drill length at least 85mm)

SAVE THIS MANUAL

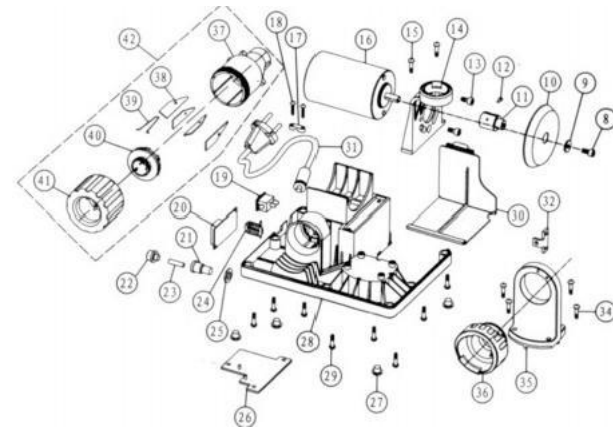
You will need the manual for the safety warnings and cautions, assembly instructions, operating procedures, maintenance procedures, trouble shooting, parts list, and diagram.

SAFETY WARNING & CAUTIONS

WARNING: When using electric tools, machines, or equipment, basic precautions should always be followed to reduce the risk of fire, electric shock, and personal injury.

READ ALL INSTRUCTIONS BEFORE USING THIS TOOL!

- 1.KEEP WORK AREA CLEAN. Cluttered areas invite injuries.
- 2.OBSERVE WORK AREA CONDITIONS. Do not use machines or power tools in damp, wet, or poorly lit locations. Don't expose to rain. Keep work area well lit. Do not use electrically powered tools in the presence of flammable gases or liquids.
- 3.KEEP CHILDREN AWAY. Children must never be allowed in the work area. Do not let them handle machines, tools, or extension cords
- 4.STORE IDLE EQUIPMENT. When not in use, tools must be locked up in a dry location to inhibit rust. Always lock up tools and keep out of reach of children.
- 5.DO NOT FORCE THE TOOL. It will do the job better and more safely at the rate for which it was intended. Do not use inappropriate attachments in an attempt to exceed the tool's capacity.
- 6.USE THE RIGHT TOOL FOR THE JOB. Do not attempt to force a small tool or attachment to do the work of large industrial tool. Do not use a tool for a purpose for which it was not intended.
- 7.DRESS PROPERLY. Do not wear loose clothing or jewelry as they can be caught in moving parts. Protective, electrically non-conductive clothes and non-skid footwear are recommended when working. Wear restrictive hair covering to contain long hair.



INSTALLATION OF DUSTPROOF COVER

1.Ensure the dustproof cover (30#) is wedged into the base (28#). (See Figure A). Then make the dustproof cover (30#) level with three sides of the base (See Figure B).

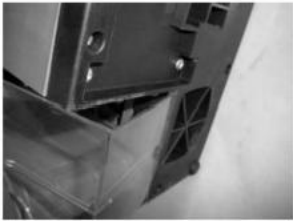


Figure A



Figure B

2.Push the dustproof cover (30#) forward the front cover (1#) direction. (See Figure C).

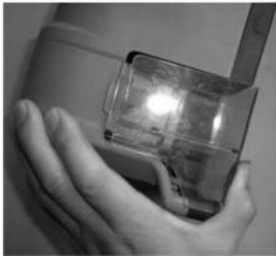


Figure C

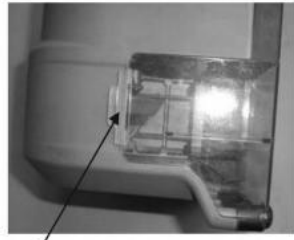


Figure D

3.Make sure the buckle totally clips the cover. The installation is now complete.(See Figure D).

Note: The machine can be operated only when it is earthed well.

The machine can be started only when safety is ensured

Other objects or human body parts should not touch the grinding wheel to avoid accidents

Cleaning

- 1.Make sure to keep the surface of your unit free of grit, dirt, and grease. Use soapy water or nontoxic solvents. Do not use petroleum-based solvents.
- 2.Keep the air vents free of foreign material at all times.

8.USE EYE AND EAR PROTECTION. Always wear ANSI approved chemical splash goggles when working with chemicals. Always wear ANSI approved impact safety goggles at other times. Wear a full-face shield if you are producing metal filings or wood chips. Wear an ANSI approved dust mask or respirator when working around metal, wood, and chemical dusts and mists.

9.DO NOT ABUSE THE POWER CORD. Do not yank it to disconnect it from the wall socket. Do not carry tools by the cord.

10.DO NOT OVERREACH. Keep proper footing and balance at all times. Do not reach over or across running machines.

11.MAINTAIN TOOLS WITH CARE. Keep tools sharp and clean for better and safer performance. Follow instructions for lubricating and changing accessories. Inspect tool cords periodically and, if damaged, have them repaired by an authorized technician. The handles must be kept clean, dry, and free from oil and grease at all times.

12.DISCONNECT POWER. Unplug when not in use, before servicing, and when changing accessories.

13.REMOVE ADJUSTING KEYS AND WRENCHES. Make it a habit to check that keys and adjusting wrenches are removed from the tool or machine work surface before plugging it in.

14.AVOID UNINTENTIONAL STARTING. Be sure the switch is in the OFF position when not in use and before plugging in. Do not carry any tool with your finger on the trigger, whether it is plugged in or not.

15.OUTDOOR EXTENSION CORDS. When the equipment is operated outdoors, use only extension cords intended for outside use. See chart under 'Extension Cords': For the proper rating depending on the length of the cord(s) being used.

16.STAY ALERT. Watch what you are doing, use common sense. Do not operate any tool when you are tired.

17.CHECK DAMAGED PARTS. Before using any tools, any part that appears damaged should be carefully checked to determine that it will operate properly and perform its intended function. Check for alignment and binding of moving parts, any broken parts or mounting fixtures, and any other condition that may affect proper operation. Any part that is damaged should be properly repaired or replaced by a qualified technician. Do not use the tool if any switch does not turn on and off properly.

18.GUARD AGAINST ELECTRIC SHOCK. Prevent body contact with earthed surfaces such as pipes, radiators, and refrigerator enclosures.

19.REPLACEMENT PARTS AND ACCESSORIES. When servicing, use only identical replacement parts. Use of any other parts will void the warranty. Only use accessories intended for use with this tool.

20.DO NOT OPERATE TOOL IF UNDER THE INFLUENCE OF ALCOHOL OR DRUGS. Read warning labels on prescriptions to determine if your judgment or reflexes are impaired while taking drugs. If there is any doubt, do not operate the tool.

21.KEEP AWAY FROM LIQUIDS. The tool is designed for dry sharpening operations only.

22.BE CAREFUL OF BITS WHEN SHARPENING. Bits will become hot. Be careful when handling - allow tips to cool for some time before storing.

23.SHARPENING HEAD MAY BECOME HOT WHILE USING. This is a normal condition and no cause for alarm. Be careful when handling.

VOLTAGE WARNING

Common household current is 240 volts. As long as your tool is rated at 240 V there will be no complications using this tool with household power points.

Do not modify your plug in any way. If you have any doubts, call a qualified electrician.

OPERATION

1.



Take hold of 35# (Positioner for Blade), release 36# (Blade Holder) by turning 39# (Locknut). Put drill bit into 35# (Positioner For Blade). (See Figure 1)

2. Press 2# (Button), to make 4# (Spring Leaf) expand (See Figure 2)



(Figure 2)



(Figure 3)

Put 40# (Hold Accessory) into 7# (Fixing Shelf), make 35# (Position for Blade) stick in 7# (Fixing Shelf) at correct position. (See Figure 3)

3. For adjusting the drill bit position, make the top of drill bit touch 6# (Terminal) firmly, and 4# (spring leaf) pinch the groove (flute) of drill (See Figure & 5)



(Figure 4)



(Figure 5)

4. Rotate 39# (Locknut) to make 36# (Blade Holder) grip the drill bit firmly;

5.



(Figure 6)

Pull out 40# (the Hold Accessory) and place it in 34# (Stand Socket). CAREFUL: Make sure that the raised section on 35# (Positioner for Blade) inserts in the groove on 34# (Stand Sockets). Move the Positioner for Blade from side to side to begin to sharpen. (See Figure 6)

Where there is no more grinding sound between the grinding wheel and the drill bit, pull out 35# Accessory and turn it 180° to sharpen the other side with the same procedure as above.

6.



Place 35# Accessory on the 14# Spacer, facing the back angle of the drill, and turn 35# Accessory to the left and right, to conduct grinding. When there is no more grinding sound between the grinding wheel and the drill, pull out 35# Accessory and turn it 180° for the other side, and then grind with the same procedure as above.

The operation is now finished. (See Figure 7)

BEFORE GRINDING



AFTER GRINDING

